



OPTIONS

Mounting method

- to screw

Fence mounts

- one-sided
- double-sided
- no

DESCRIPTION

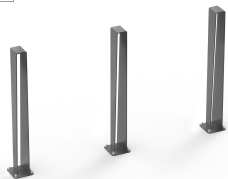
The Reliq post was crafted to fulfill its role effectively and add a distinctive touch to any area.

Reliq is constructed from a bent flat bar and a base that secures the post firmly to the ground. Its asymmetrical design and straightforward style **set it apart** with its **striking appearance, making it ideal for contemporary city environments.**

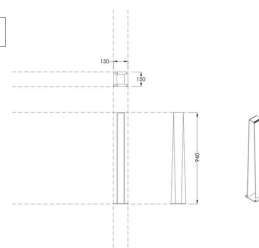
The Reliq post comes in **premium stainless steel or black steel**, available in [any RAL color](#). This model can be mounted to the ground with either wall plugs or a concrete base.

Explore the complete [Reliq](#) collection of [urban furniture!](#)

ZANO
SINCE 1988



ZANO
SINCE 1988



ZANO
SINCE 1988

vyhledat produkt v 3D



GENERAL TECHNICAL DATA

Dimensions

- width: 4 1/2 in
- height: 37 in
- depth: 4 1/2 in
- base width: 6 in
- base depth: 6 in

Materials

- stainless steel or carbon steel
- spruce or exotic wood

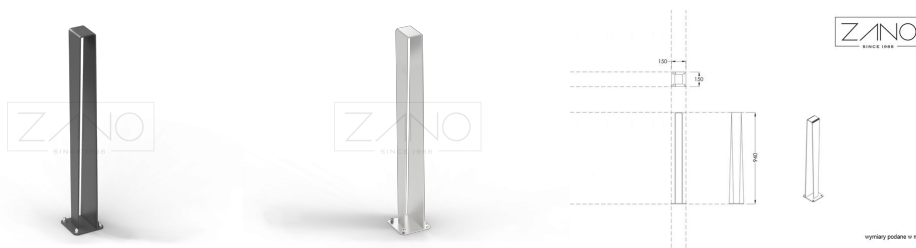
ZANO



Michał Gzela

Product: Reliq post
 Catalog number: **01.089**
 Designer: Michał Gzela

In accordance with the Polish Law on Copyright and Related Rights of 04.02.1994 (Official Journal of Laws No. 24, item 83, corrected: Journal of Laws No. 43, item 170) and in accordance with the EU copyright legislation including all EU directives and regulations on copyright, Zano Mirosław Zarotynski Company, reserves the copyright of drawings, descriptions, 3D models, renderings, graphics, content contained in offers, attachments to offers and all other documents. Its content is the intellectual property of ZANO Mirosław Zarotynski company. The use of author's ideas, solutions, copying, distribution of photos, graphics or fragments of graphics, descriptive texts, for profit, without the permission of the author - ZANO Mirosław Zarotynski company - is prohibited and constitutes a copyright infringement and is punishable.



td>

NOTE: The drawings do not reflect the actual dimensions of the foundation. These are only sample installation diagrams taking into account the type of anchoring and the material of the substrate to which to attach the furniture.

The size of the foundation depends on local foundation conditions.



INSTALLATION TO PAVING WITH FOUNDATION

Installation description

1. ZANO product
2. Quick-attachment / quick-attachment or chemical anchor
3. Stone paving / concrete paving / stone slabs / concrete slabs
4. Sand ballast (approximately 2 - 4 cm)
5. Stone aggregate substructure
6. Concrete foundation of C16/20 class (top surface of concrete 10 cm below paving surface)
7. Local land



MOUNTING TO PAVING

Installation description

1. ZANO product
2. Quick-attachment / quick-attachment or chemical anchor
3. Stone paving / concrete paving / stone slabs / concrete slabs
4. Sand ballast (approximately 2 - 4 cm)
5. Stone aggregate substructure
6. Local land



MOUNTING TO CONCRETE / ASPHALT

Installation description

1. ZANO product
2. Quick-attachment / quick-attachment or chemical anchor
3. Fixed restrained surface, such as concrete or asphalt
4. Concrete foundation of C16/20 class (top surface of concrete 10 cm below paving surface)
5. Stone aggregate substructure
6. Sand ballast (approximately 2 - 4 cm)
7. Local land



MOUNTING TO CONCRETE FOUNDATION

Installation description

1. ZANO product
2. Quick-attachment / quick-attachment or chemical anchor
3. Concrete foundation of C16/20 class (top surface of concrete 10 cm below paving surface)
4. Local land