

## OPTIONS

### Housing

- European coniferous wood
- hardwood of European origin
- oiled exotic wood
- premium exotic wood

### Mounting method

- to screw

### Contribution

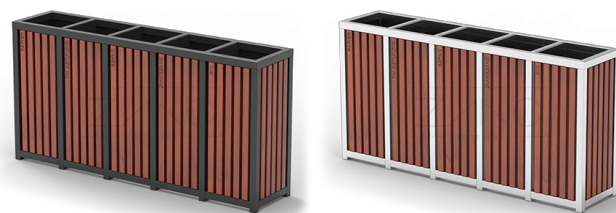
- galvanized sheet insert

## DESCRIPTION

The Altus five-segment recycling trash can is designed for sorting waste and blends sleek steel with high-quality wood for a visually appealing look. Clients can select either structural steel coated in RAL paint or stainless steel for the body, and spruce or exotic wood for the accents. This model features four compartments, each outfitted with a galvanized liner. For waste sorting, you have the option to use just the insert or integrate color-coded disposable bags. The Altus bin is highly practical – each wooden slat is engraved with labels indicating what goes in each bin, and these inscriptions can be customized to meet specific needs. The Altus recycling bin can either stand alone, ideal for places like mall walkways, or be securely mounted to the ground. Altus represents the fusion of modern design and elegance in street furniture while promoting environmental sustainability.



**Sprawdź ofertę**  
naszych **koszy recyklingowych,**  
zgodnych z **nowymi wytycznymi na 2019!**



## GENERAL TECHNICAL DATA

### Dimensions

- height: 32 1/4 in

### Capacity

- capacity: 66 gal

### Materials

- stainless steel profiles  
- galvanized sheet insert  
- wooden planks

ZANO



*Filip Babiarz*

Product:  
Altus recycling garbage can  
Catalog number: **15.552**  
Designer: Filip Babiarz

In accordance with the Polish Law on Copyright and Related Rights of 04.02.1994 (Official Journal of Laws No. 24, item 83, corrected: Journal of Laws No. 43, item 170) and in accordance with the EU copyright legislation including all EU directives and regulations on copyright, Zano Mirosław Zarotynski Company, reserves the copyright of drawings, descriptions, 3D models, renderings, graphics, content contained in offers, attachments to offers and all other documents. Its content is the intellectual property of ZANO Mirosław Zarotynski company. The use of author's ideas, solutions, copying, distribution of photos, graphics or fragments of graphics, descriptive texts, for profit, without the permission of the author - ZANO Mirosław Zarotynski company - is prohibited and constitutes a copyright infringement and is punishable.

td>

**NOTE: The drawings do not reflect the actual dimensions of the foundation. These are only sample installation diagrams taking into account the type of anchoring and the material of the substrate to which to attach the furniture.**

The size of the foundation depends on local foundation conditions.



### INSTALLATION TO PAVING WITH FOUNDATION

#### Installation description

1. ZANO product
2. Quick-attachment / quick-attachment or chemical anchor
3. Stone paving / concrete paving / stone slabs / concrete slabs
4. Sand ballast (approximately 2 - 4 cm)
5. Stone aggregate substructure
6. Concrete foundation of C16/20 class (top surface of concrete 10 cm below paving surface)
7. Local land



### MOUNTING TO PAVING

#### Installation description

1. ZANO product
2. Quick-attachment / quick-attachment or chemical anchor
3. Stone paving / concrete paving / stone slabs / concrete slabs
4. Sand ballast (approximately 2 - 4 cm)
5. Stone aggregate substructure
6. Local land



### MOUNTING TO CONCRETE / ASPHALT

#### Installation description

1. ZANO product
2. Quick-attachment / quick-attachment or chemical anchor
3. Fixed restrained surface, such as concrete or asphalt
4. Concrete foundation of C16/20 class (top surface of concrete 10 cm below paving surface)
5. Stone aggregate substructure
6. Sand ballast (approximately 2 - 4 cm)
7. Local land



### MOUNTING TO CONCRETE FOUNDATION

#### Installation description

1. ZANO product
2. Quick-attachment / quick-attachment or chemical anchor
3. Concrete foundation of C16/20 class (top surface of concrete 10 cm below paving surface)
4. Local land